

APARTMENT

3

FLOOR

2

ROOMS

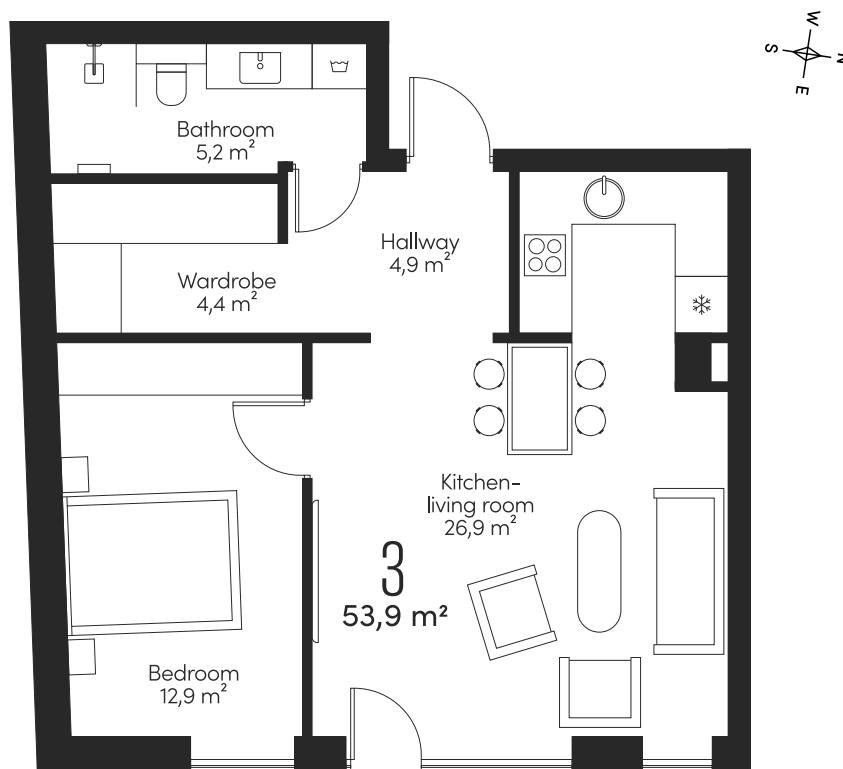
2

SIZE

53,9 m²

A HOME IN THE HEART OF THE CITY

A spacious layout, separate kitchen nook, and walk-in closet make Apartment 3 a modern home on quiet Tatari Street in Tallinn city center.



TATARI STREET

This is a guest apartment.



The picture is illustrative

VIA TATARI

APARTMENT

3

FLOOR
2

ROOMS
2

SIZE
53,9 m²

VIATATARI.EE



TAILOR-MADE INTERIOR

An interior tailored to you

In the unique VIA TATARI apartment building, you can also have a unique interior for your new home – created exactly according to your wishes with the help of our interior designer, Liisa Peri.

Alternatively, you can opt for a high-quality standard interior solution, showcased on the following pages.





Interior pictures are illustrative

STANDARD INTERIOR | MATERIALS & DETAILS

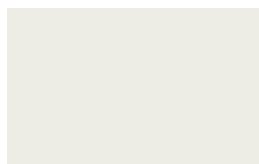
Living space floors

Oak parquet, Boen Oak White Andante, floating installation, white oil wax finish, 14x138x2200 mm



Wall colour

Tikkurila F486



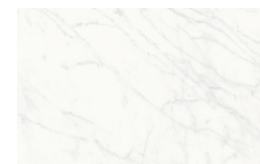
Door coloring

Tikkurila light gray V487 Cloister Valamo



Hallway & bathroom floors

Florim Stone_01, Textured matte finish, tone Stone 01, 800x800 mm



Bathroom walls

Florim Stone_01, glossy finish, tone Stone 01, 800x800 mm



Door handles

Fiskostar Stockholm



Plugs, switches

Jung LS 990





The picture is illustrative

STANDARD INTERIOR | BATHROOM APPLIANCES

Bathroom sink
Catalano Sfera 55



Bathroom faucet
Gessi Emporio
Via Manzoni,
chrome



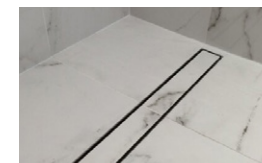
Shower faucet
Gessi Emporio
Via Manzoni,
thermostatic
built-in shower
system with
overhead
shower,
chrome



Towel drying rack
Margaroli, Sole



Shower trap
ACO ShoverDrain C,
stainless steel, tileable cover



Toilet
Catalano Zero



Toilet flushing panel
Grohe Skate Cosmopolitan,
stainless steel





VIA TATARI

APARTMENT

3

FLOOR

2

ROOMS

2

SIZE

53,9 m²

VIATATARI.EE



The picture is illustrative

CONSTRUCTIONS



Foundation

Pile foundation



Interior walls of apartments

Plaster walls with a steel frame



Exterior walls

Fully concrete hollow block, monolithic reinforced concrete walls, lightweight walls (thermal grooves / steel profiles, insulation, exterior finishing)



Apartment partitions

Fully concrete hollow block + steel frame with gypsum wall



6th floor roof ceiling

Stone tiles, roofing roll material, insulation, prestressed reinforced concrete slab



7th floor roof ceiling

Steel beams / grooves, insulation, roofing roll material



Interior ceilings

Post-tensioned concrete slab / prestressed concrete slab



Windows

Wood-aluminum windows with triple glazing

COMMUNICATIONS



Energy efficiency

Efficiency rating B



Electricity and low current

Electrical installation and cabling of data communication systems in accordance with the apartment plan; electricity and low current shield situated in the wardrobe; remotely accessible electricity meters



Heating system

Economical district heating, room-by-room zoned water underfloor heating



Ventilation

Energy-efficient mechanical ventilation with heat recovery and apartment-based control



Water and sewage systems

Central water and sewerage systems, automatic remotely readable water meters