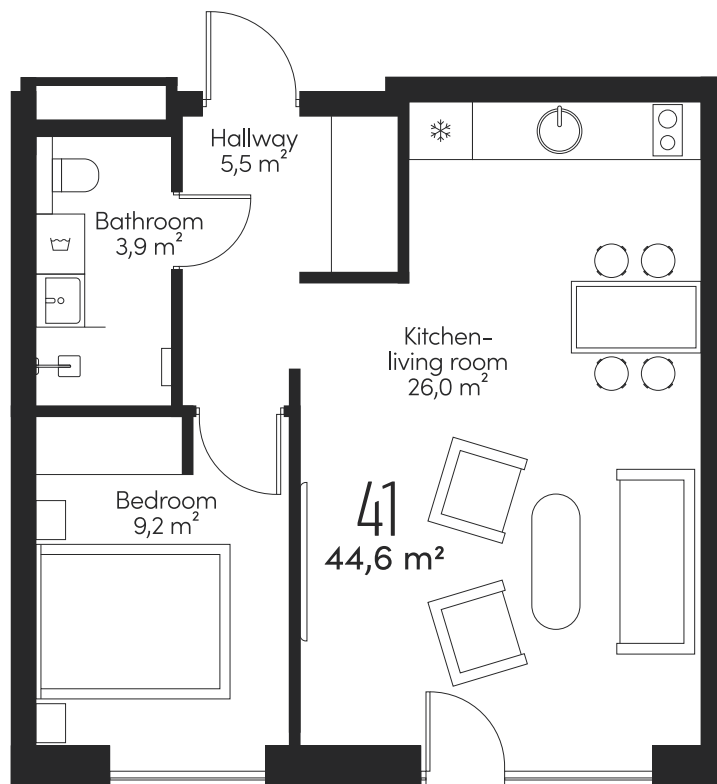


## A HOME IN THE HEART OF THE CITY

Large living room and separate bedroom in Apartment 41 create a cozy and comfortable living space in Tallinn city center.



TATARI STREET

This is a guest apartment.



The picture is illustrative



## TAILOR-MADE INTERIOR

# An interior tailored to you

In the unique VIA TATARI apartment building, you can also have a unique interior for your new home – created exactly according to your wishes with the help of our interior designer, Liisa Peri.

Alternatively, you can opt for a high-quality standard interior solution, showcased on the following pages.







Interior pictures are illustrative

## STANDARD INTERIOR | MATERIALS & DETAILS

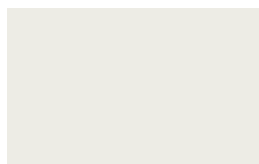
### Living space floors

Oak parquet, Boen Oak White Andante, floating installation, white oil wax finish, 14x138x2200 mm



### Wall colour

Tikkurila F486



### Door coloring

Tikkurila light gray V487 Cloister Valamo



### Hallway & bathroom floors

Florim Stone\_01, Textured matte finish, tone Stone 01, 800x800 mm



### Bathroom walls

Florim Stone\_01, glossy finish, tone Stone 01, 800x800 mm



### Door handles

Fiskostar Stockholm



### Plugs, switches

Jung LS 990





The picture is illustrative

## STANDARD INTERIOR | BATHROOM APPLIANCES

**Bathroom sink**  
Catalano Sfera 55



**Bathroom faucet**  
Gessi Emporio  
Via Manzoni,  
chrome



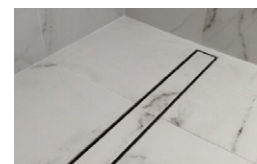
**Shower faucet**  
Gessi Emporio  
Via Manzoni,  
thermostatic  
built-in shower  
system with  
overhead  
shower,  
chrome



**Towel drying rack**  
Margaroli, Sole



**Shower trap**  
ACO ShoverDrain C,  
stainless steel, tileable cover



**Toilet**  
Catalano Zero



**Toilet flushing panel**  
Grohe Skate Cosmopolitan,  
stainless steel





# VIA TATARI

APARTMENT

41

FLOOR

5

ROOMS

2

SIZE

44,6 m<sup>2</sup>

VIATATARI.EE



The picture is illustrative

## CONSTRUCTIONS



### Foundation

Pile foundation



### Exterior walls

Fully concrete hollow block, monolithic reinforced concrete walls, lightweight walls (thermal grooves / steel profiles, insulation, exterior finishing)



### 6th floor roof ceiling

Stone tiles, roofing roll material, insulation, prestressed reinforced concrete slab



### Interior ceilings

Post-tensioned concrete slab / prestressed concrete slab



### Interior walls of apartments

Plaster walls with a steel frame



### Apartment partitions

Fully concrete hollow block + steel frame with gypsum wall



### 7th floor roof ceiling

Steel beams / grooves, insulation, roofing roll material



### Windows

Wood-aluminum windows with triple glazing

## COMMUNICATIONS



### Energy efficiency

Efficiency rating B



### Electricity and low current

Electrical installation and cabling of data communication systems in accordance with the apartment plan; electricity and low current shield situated in the wardrobe; remotely accessible electricity meters



### Heating system

Economical district heating, room-by-room zoned water underfloor heating



### Ventilation

Energy-efficient mechanical ventilation with heat recovery and apartment-based control



### Water and sewage systems

Central water and sewerage systems, automatic remotely readable water meters